



VERZUN

THE ONE, PALM JUMEIRAH, UNITED ARAB EMIRATES

One Palm Penthouse, Managed by Dorchester

\$100,000,000

FINEST PROPERTIES. GLOBAL COLLECTION.



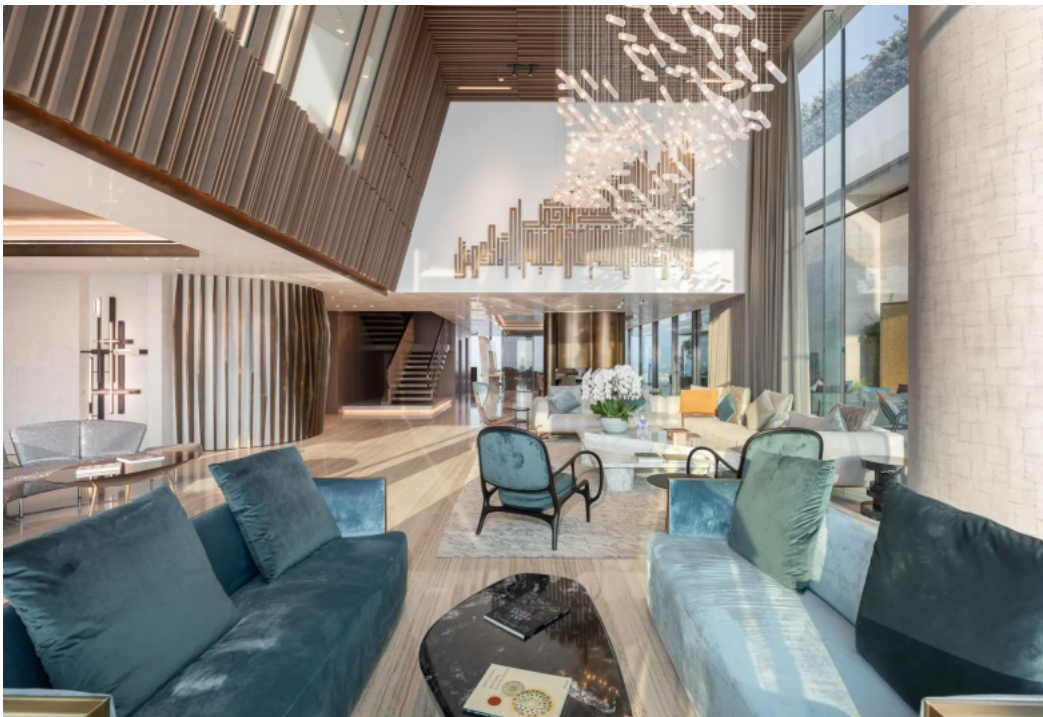
BEDS 5 BATHS 6 SIZE 24,789 sq.ft

Description

Experience the pinnacle of luxury living in this exclusive One Palm Penthouse, a true architectural masterpiece offering unrivaled elegance, breathtaking panoramic views, and world-class amenities.

Spanning an expansive 24,789 sq. ft. Gross BUA, this fully furnished, turn-key penthouse is managed by the prestigious Dorchester Collection, ensuring an unmatched level of service and exclusivity.

This one-of-a-kind penthouse is a statement of prestige and exclusivity, designed for ultra-high-net-worth individuals seeking the absolute best in waterfront living.



Features

PROJECT ID: 32025
LOCATION: One Palm Jumeirah
5 B/R / 6 BATH:
GROSS BUA: 24,789 sq.ft
INTERNAL: 14,470 sq.ft
TERRACE: 10,318 sq.ft
TURN KEY: (Fully Furnished)
MANAGED: by Dorchester



To request a viewing
or more information,
please contact us.

VERZUN

Phone: +372 5299 386
E-mail: contact@verzun.com

FINEST PROPERTIES. GLOBAL COLLECTION.
